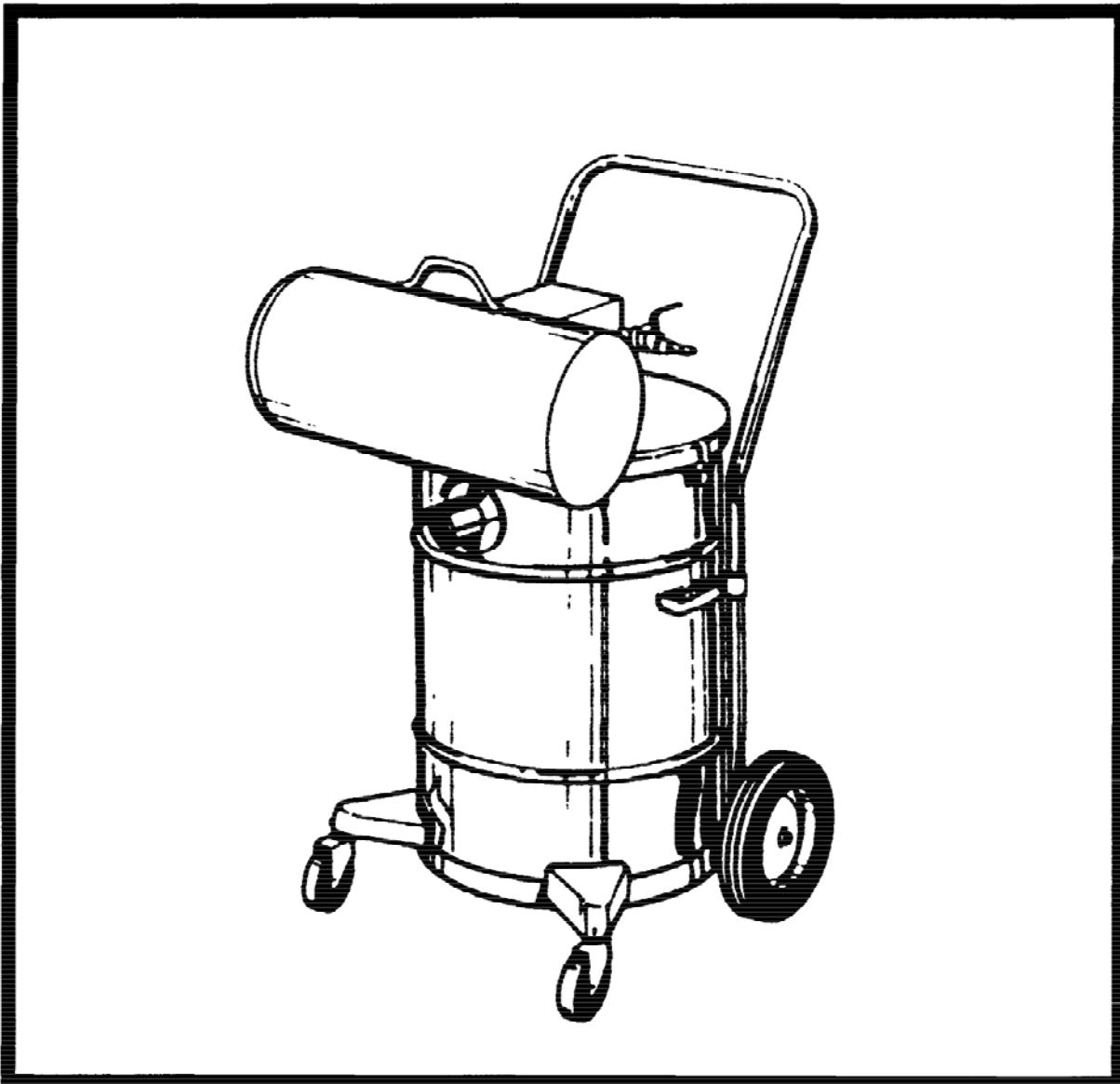


**700 Series
Air Operated
Vacuums
15, 30, & 55
Gallon Units**

**Model: C70015-01, 02
C70030-01
C70055-01
(703 Wet Dry)**

■ OPERATION ■ SERVICE ■ PARTS ■ CARE



Revised 1/94

Minuteman[®]

**MODEL C70015-01 AND C70015-02 AIR OPERATED
WET/DRY RECOVERY VACUUMS**

OPERATING INSTRUCTIONS

INSPECTION

Carefully unpack and inspect your machine for shipping damage. Each unit is tested and thoroughly inspected before shipment, and any damage is the responsibility of the delivering carrier who should be notified. Read all instructions carefully before operating.

SPECIAL WARNING

Air operated equipment can generate static electricity during use. Static dissipating arcing can be generated and occur if equipment and accessories are not grounded. Risk of explosion is possible if operated near explosive materials or vapors. Do not operate this equipment near flammable materials such as solvents, thinners, fuels, grain dust, etc

AIR PRESSURE AND C.F.M. VOLUME REQUIRED

For maximum performance, operate with 1/2" air pressure line, 80 PSI (max. 100 PSI) and 42 input C.F. M. Air pressure control valve can be regulated to operate with lower pressure and C.F. M. when maximum is not required

MAINTENANCE AND USAGE

Air supplied to vacuum must be clean and dry to avoid contamination in silencer and to maintain optimum performance.

Empty tank, clean filter bag and replace disposable filters regularly. Clogged filters restrict air flow and results in reduced vacuum performance.

Always shut off main air supply and open air valve at vacuum to relieve pressure before disconnecting air pressure line.

**ASSEMBLY PROCEDURE FOR MODEL C70015-01 AND C70015-02
WET/DRY RECOVERY VACUUMS**

(See schematic on page10, figure1)

1. For dry recovery, place filter bag assembly #2 onto tank assembly #4.
2. Place lid assembly #1 onto tank and fasten lid latches.
3. Connect 1/2" air pressure line to shut off valve on lid.
4. Attach vacuum hose to intake. Vacuum intake will accept 1 1/2" and/or 2" hose.
5. To operate, open air shut off valve to desired setting. OPTION: For fine dust recovery, a filter bag protector #3 is recommended to be installed ahead of the filter bag assembly #2. (Must be ordered as separate item #805038PKG of 12.)

CLEANUP PROCEDURE

1. Shut off air supply at lid assembly.
2. Loosen lid latches and remove lid assembly.
3. Remove cloth filter bag assembly.
4. When filter bag protector is used, remove protector.
5. Empty tank into suitable trash container.
6. Reassemble following above procedure.

For wet recovery, remove filter bag #2 and filter protector #3 if used. Ball float #25 within float cage #26, page 3, will activate at 10 gallon recovery level.

Always empty and dry tank assembly at end of each operating day or when vacuum will not be in use over extended period of time

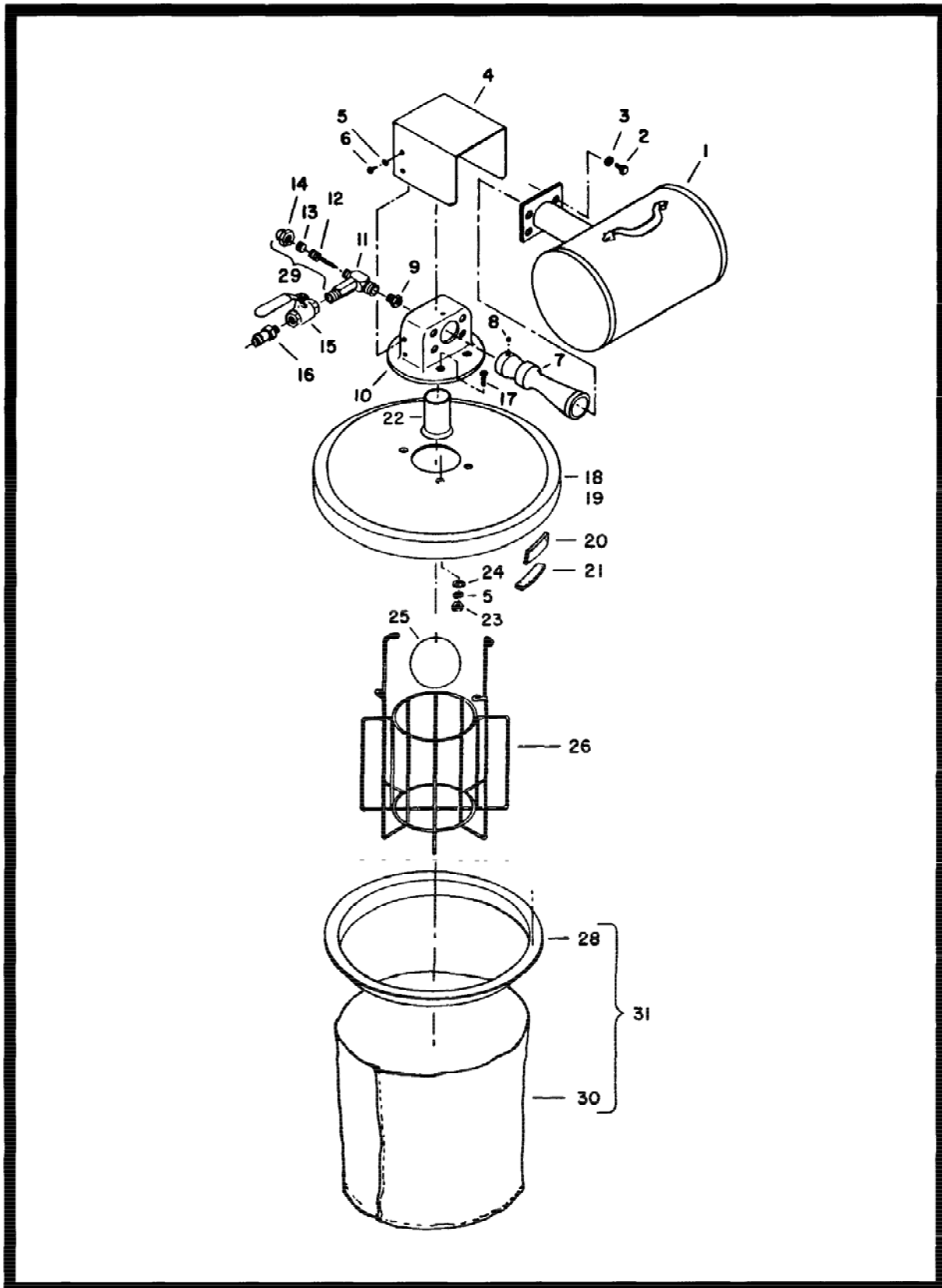
**ASSEMBLY PROCEDURE FOR MODEL C70030-01 AND C70055-01
WET/DRY RECOVERY VACUUMS**
(See schematic on page 10, figure 2)

1. For dry recovery, place heavy duty plastic bag liner, no. 6, into drum and drape over rim of drum no. 7 (without bag liner all debris you pick up will go directly into the drum).
2. Place adaptor ring no. 5 onto drum.
3. Place filter bag assembly no. 2 onto adaptor ring. Option: for fine dust recovery, a filter bag protector no. 3 is recommended to be installed ahead of the filter bag assembly. When installing the filter bag protector, insert it into the adaptor ring and drape the elastic over the rim of the adaptor to hold it in place. (Filter bag protectors must be ordered as separate item #805038, package of 12.)
4. Place air vacuum lid assembly no. 1 onto adaptor and fasten lid latches.
5. Connect 1/2" air pressure line to shut off valve on lid.
6. Attach vacuum hose to intake vacuum intake will accept 1 1/2" and/or 2" hose.
7. To operate, open air shut off valve to desired setting. When recovering fine dust open air valve to 1/2 opening to avoid filter from overloading prematurely. Increase air supply gradually as vacuum performance may decrease.

CLEANUP PROCEDURE

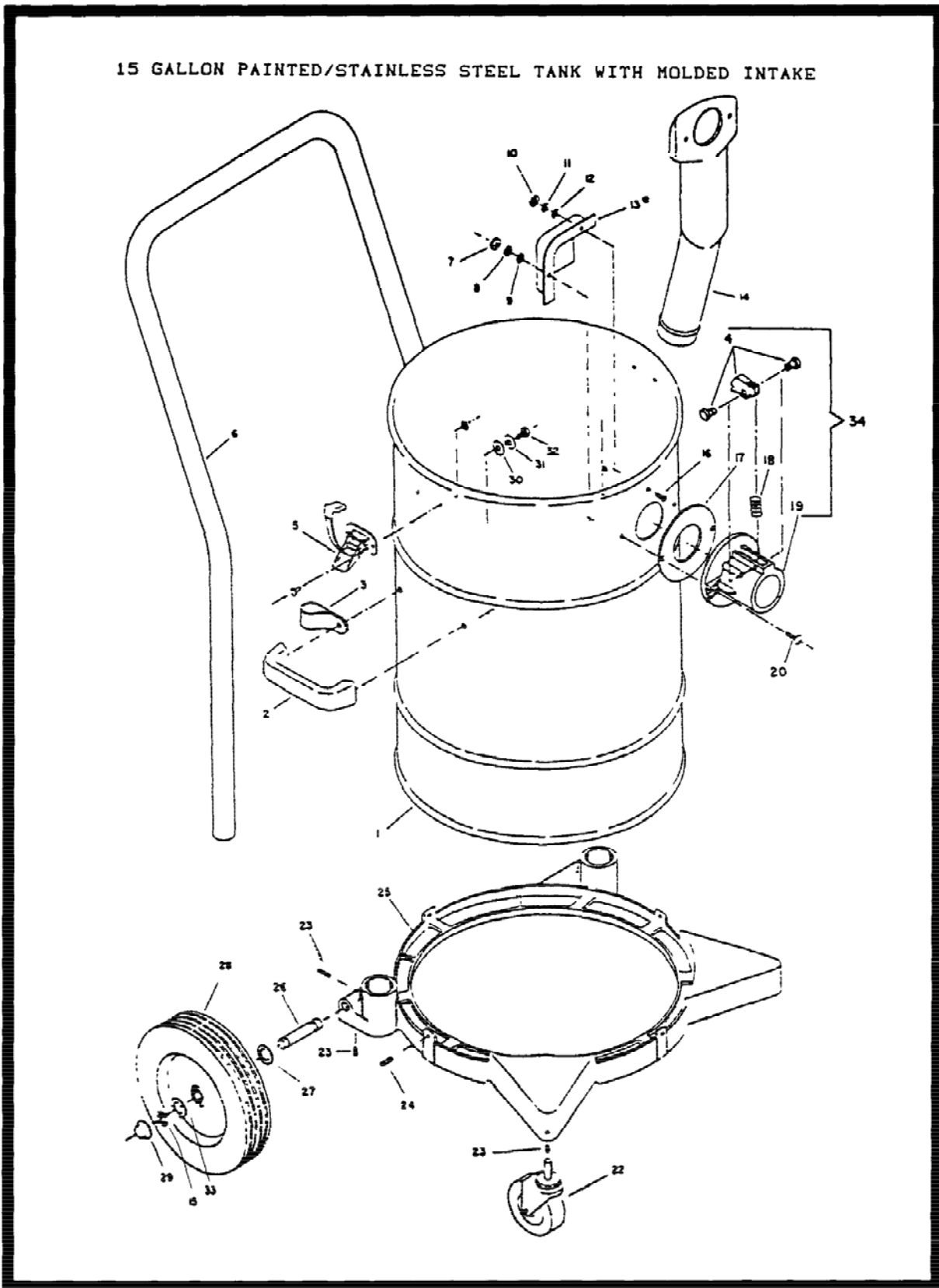
1. Shut off air supply at lid assembly.
2. Loosen lid latches and remove lid assembly.
3. Remove cloth filter bag assembly.
4. When filter bag protector is used, remove protector and place in drum or bag liner with debris.
5. Remove adaptor ring.
6. If bag liner is used, gather liner at the top, tie the bag liner, place drum on its side and slide out bag liner with debris.
7. If bag liner is not used, empty drum into suitable trash container.

For wet recovery place adaptor onto drum, remove filter bag and filter protector if used. Place the vacuum lid assembly onto adaptor on drum without filters.



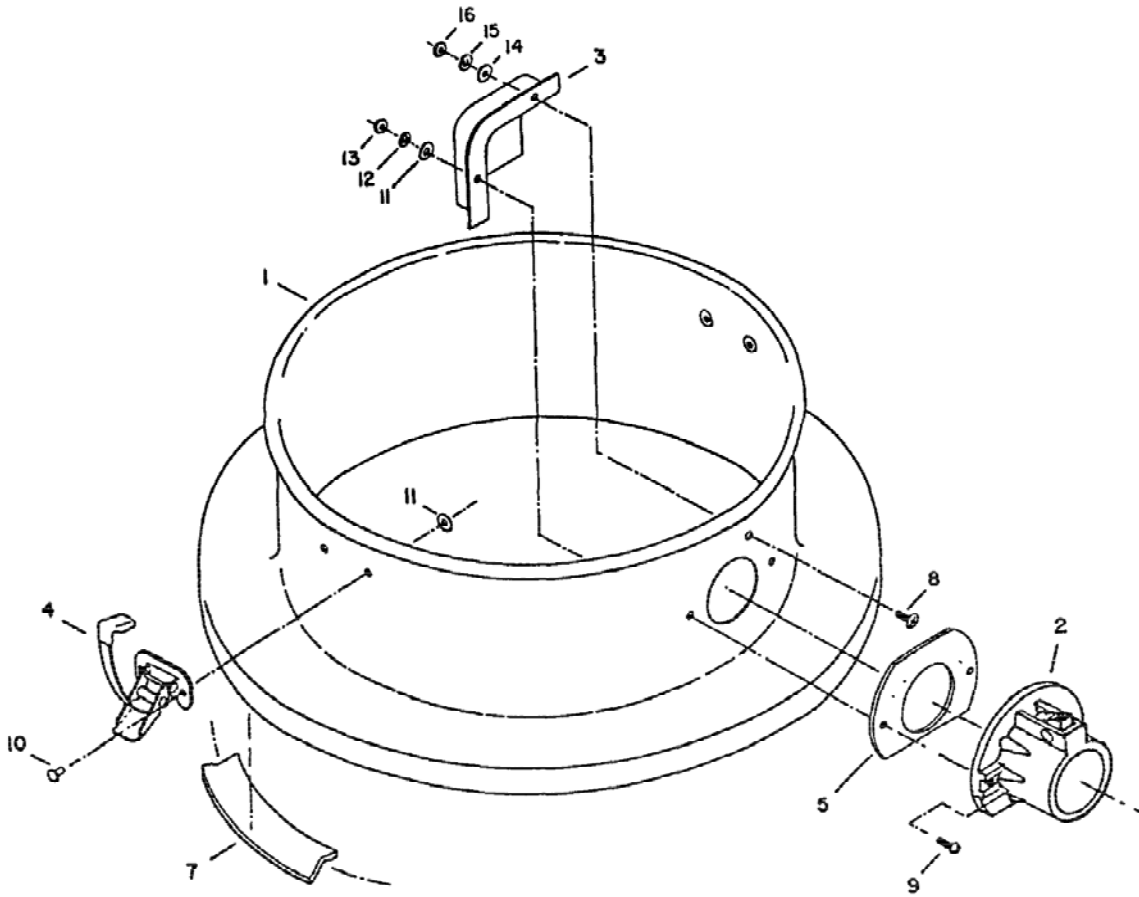
Parts Listing

ITEM	PART NO.	QUANTITY	DESCRIPTION
1	703011	1	Muffler 700 series
2	711229	4	Blt-HH 5/16-18 x .87 ST
3	711545	4	WSR, Helical SPR LOC 5/16
4	700009	1	Cover
5	711543	5	WSR, Helical SPR LOC #10
6	710353	4	SCR-MC 10-32 x 37 ST PL
7	701006MCH	1	Horn, venturi
8	711005	1	SCR-SK 1/4-20 x 31
9	701029	1	Orifice, Hex
10	701005MCH	1	Housing
11	750653	1	Var. orifice HSG inlet asy
12	750641	1	Needle Assembly
13	711229	1	SCR-SK 3/8-24 x .25
14	711357	1	Nut-Acorn 5/8-11 ST PL
15	701009	1	Valve, .50
16	701010	1	Coupler, Male .50
17	710357	4	SCR-MC 10/32 x .75 ST PL
18	703001PTD	1	Lid only
19	750670	1	Lid asy inc 18, 20, 21
20	480053	1	Gasket
21	480052	1	Gasket
22	703009	1	Tube
23	711310	4	Nut-Hex 10-32 ST PL
24	711503	4	WSR, Flat #10
25	380046	1	Float ball
26	500024	1	Float cage
28	760131	1	Bag ring
29	701007	1	Var orifice asy Inc 9, 11, 12, 13, 14
30	805054	1	Cloth bag only
31	805058	1	Cloth bag assembly complete
****	703111		Lid assembly complete



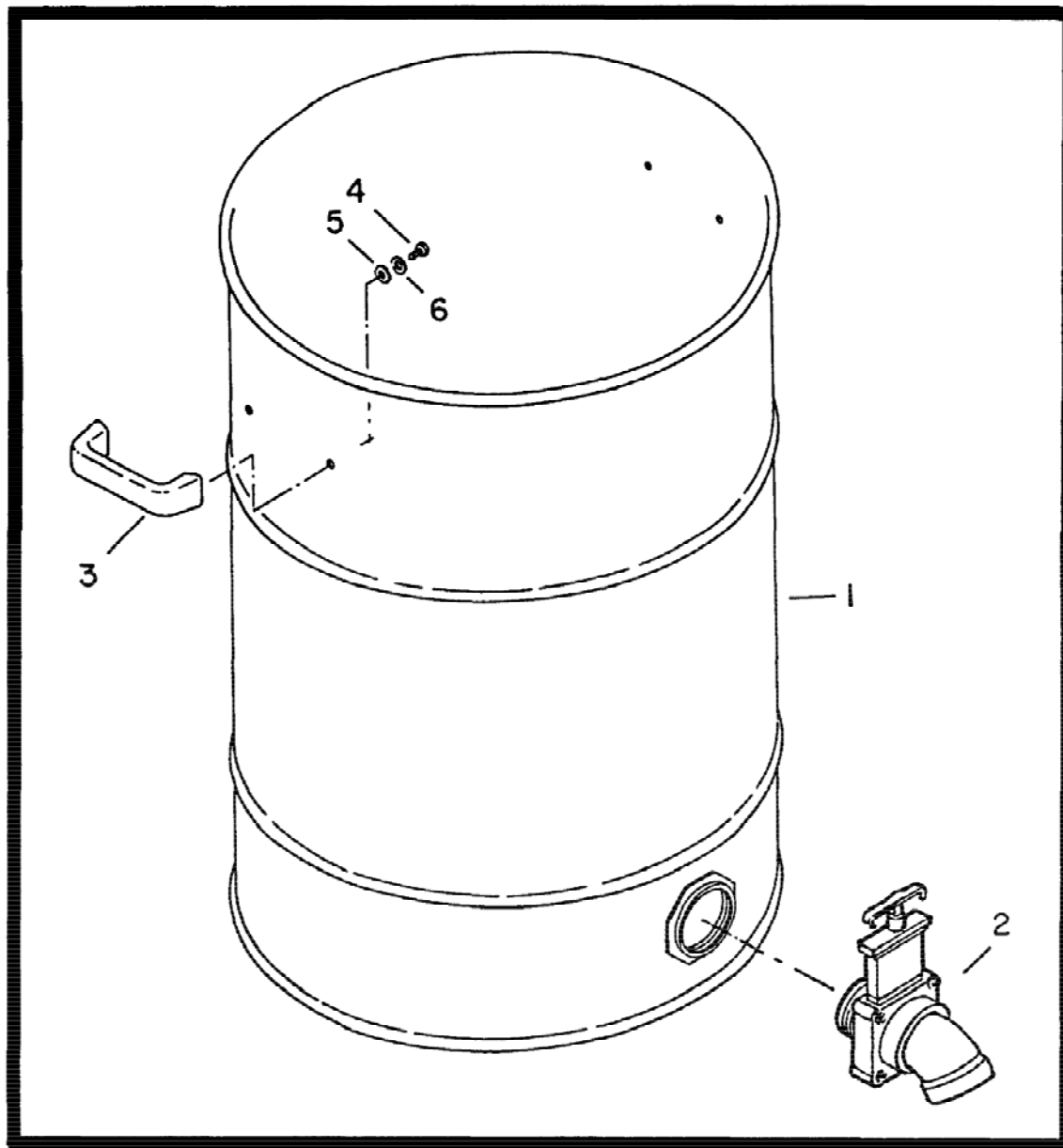
Parts List

ITEM NO.	PART NO.	QTY.	DESCRIPTION
1	900001	1	Tank, PTD 15 gal
1a	900003POL	1	Tank, Polished 15 Gal SS
2	900031	1	Handle, Tank Polished
3	900038	2	Clamp, Handle
4	390001	1	Trigger with Pins
5	761054	2	Latch
6	900037PLT	1	Handle, Plated
7	711310	2	Nut-Hex 10-32 ST PL
8	711543	2	Washer-Helical #10
9	711503	2	Washer-Flat #10
10	711304	1	Nut-Hex 8-32 ST PL
11	711542	1	Washer-Helical #8
12	711502	1	Washer-Flat #8
13	900035	1	Deflector, Intake
14	390016	1	Molded Downtube, New Style
15	711713	2	Retaining Ring-E Ext.
16	710530	1	SCR-MC 8-32 x 5 BR
17	390087	1	Gasket
18	390002	1	Spring
19	390000	1	Molded Intake
20	710154	2	SCR-MC 10-32 x 562 SS
22	900033	2	Caster, Swivel
23	711005	4	SCR-SK 1/4-20 x .31
24	711006	6	SCR-SK 1/4-20 x .62
25	760984PTD	1	Bracket, Wheel
26	900066	2	Axle
27	711524	2	Washer-Wave 52 x 87 x 01
28	900040	2	Wheel
29	130032	2	Cap, Retainer
30	711591	4	Washer-Rubber
31	711505	4	Washer-Flat
32	711203	4	Bolt-HH 1/4-20 x 62
33	711594	2	Washer-Flat .88 x 03 NI
34	390100	1	Molded Intake Complete
***	390012		Molded Adapter 1-1/4
***	390015		Molded Adapter 1-1/2
***	390020		Molded Adapter 2.00
***	750220		Tank Assy. Comp. 15 Gal. PTD Asbestos
***	750221		Tank Assy. Comp. 15 Gal. SS Asbestos
***	750322		Wheel Bracket Assy. Complete
***	750381		Tank Assy. Comp. PTD w/Deflector
***	750382		Tank Assy. Comp. SS w/Deflector



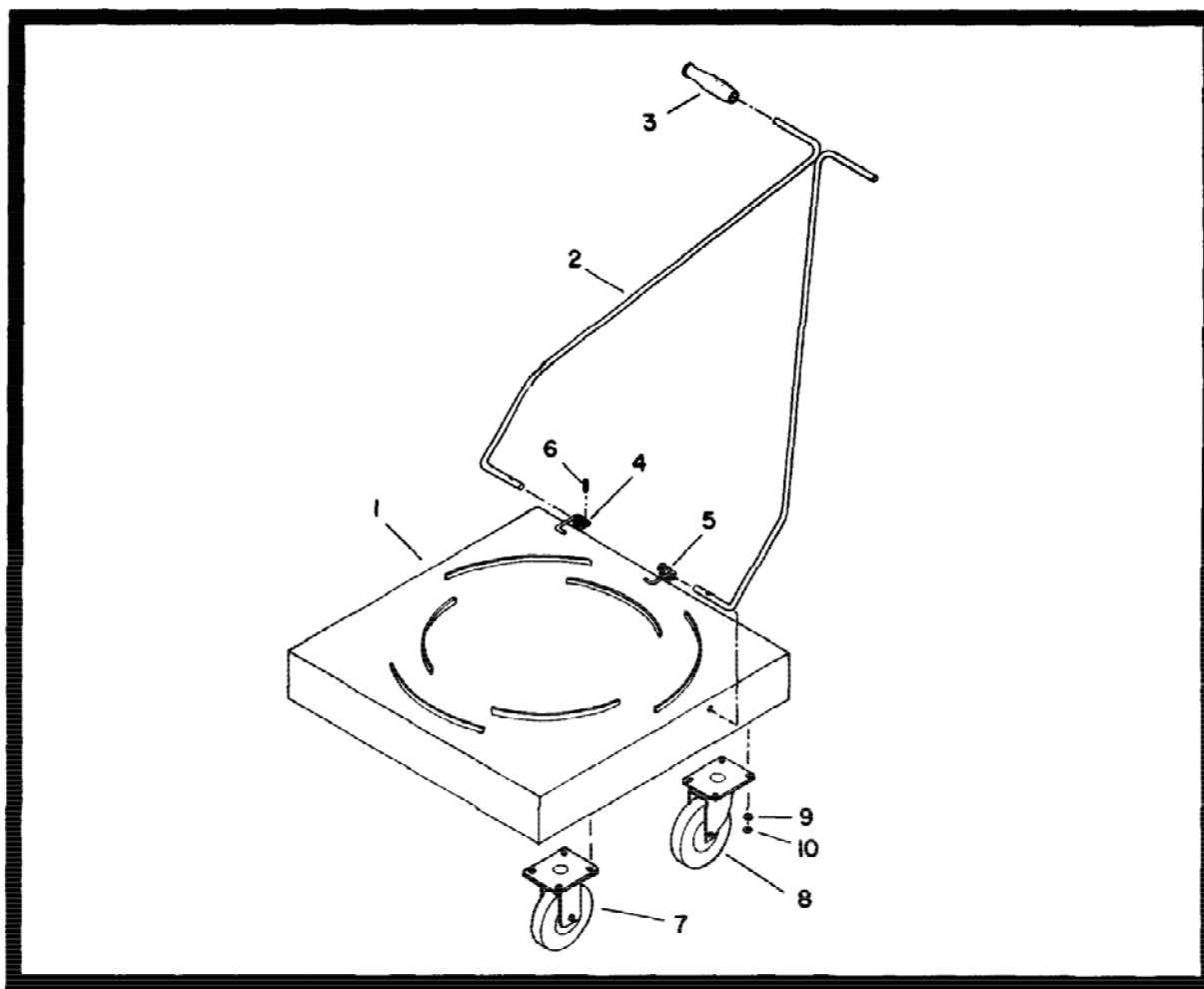
Parts List

Item	Part No.	Qty	Description
1	806016PTD	1	55 Gal. Adapter Painted
1a	806015PTD	1	30 Gal. Adapter Painted
2	390100MCH	1	Molded Intake MCH 15/30
3	900035	1	Deflector, Intake
4	761054	2	Latch
5	390087	1	Gasket Diecut Poron Intake
7	806006	1	Gasket, Raw
8	710530	1	SCR-MC 8-32 x .50 BR
9	712824	2	SCR-THMS 10-24 x .75 STPL
10	711915	4	Rivet-Tube .19 x .28 NI PL
11	711503	6	WSR-Flat #10
12	711543	2	WSR-Helical #10
13	712638	2	Nut Hex 10/24 SS Nyloc
14	711502	1	WSR-Flat #8
15	711542	1	WSR-Helical #8
16	711304	1	Nut-Hex 8-32 STPL
***	C80601-70		30 Gal. Adapter Assy.
***	C80601-80		55 Gal. Adapter Assy.



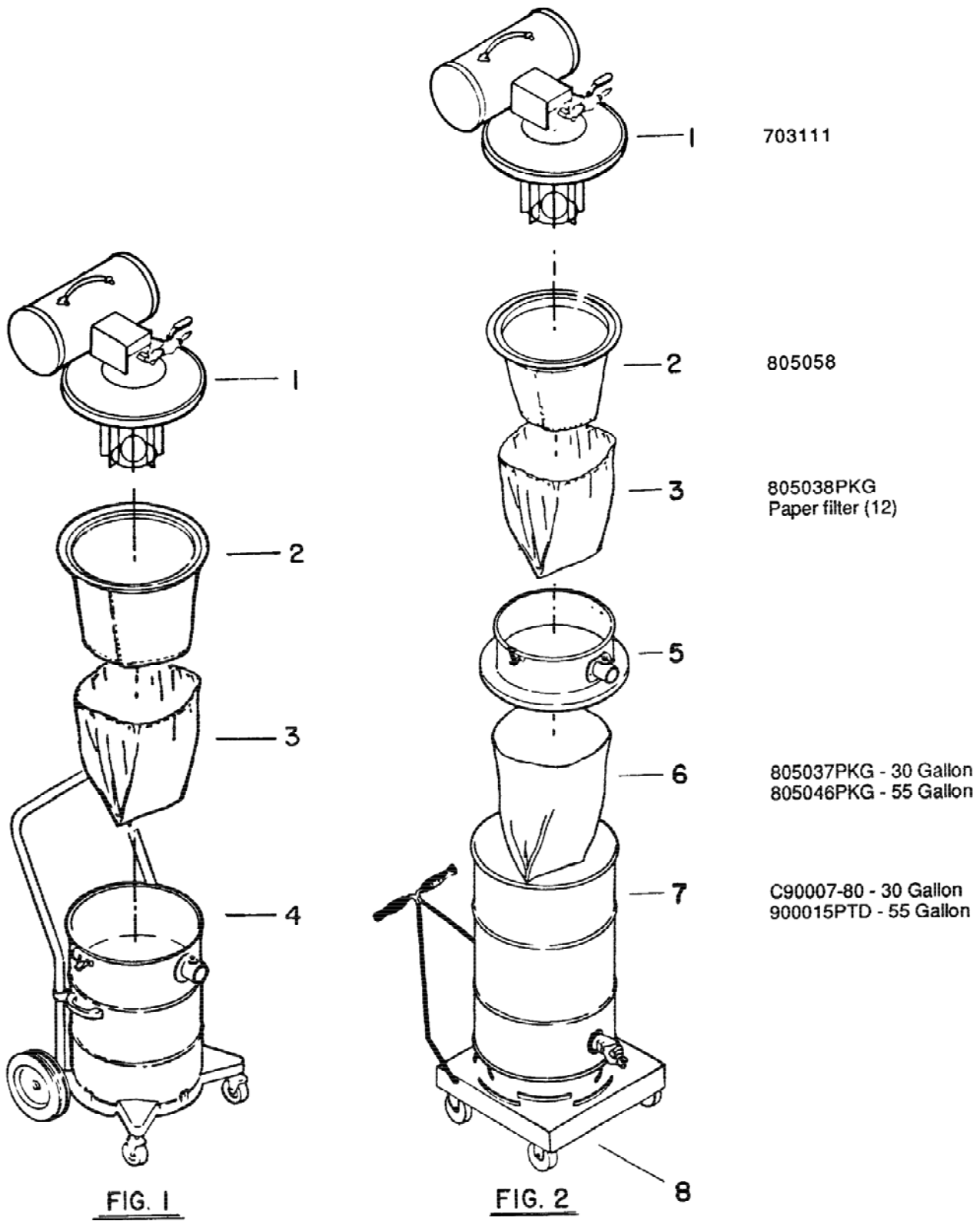
PARTS LIST

Item	Part No.	Qty	Description
1	900078PTD	1	Tank 30 Gal. PTD Less Handles
1a	900015PTD	1	Tank 55 Gal. PTD No Handles
2	900047	1	Dump Valve
3	900031POL	2	Handle, Tank Polished
4	711203	4	BLT, HH 1/4-20 x .62
5	711591	4	Washer, Rubber
6	711505	4	WSR, Flat 1/4
***	C90007-80		Tank 30 Gal. Complete
***	805037PKG		Drum Liner 30 Gal. Pkg. 12
***	805046PKG		Drum Liner 55 Gal. Pkg. 12



Parts Listings

ITEM NO.	PART NO.	QUANTITY	DESCRIPTION
1	750045	1	Weldment dolly 30/55
2	900051	1	Weldment, handle
3	900052	2	Grip, handle
4	900080	1	Spring, torsion RH
5	900081	1	Spring LH
6	711642	2	Rollpin
7	761050	2	Caster, rigid 5"
8	761049	2	Caster, swivel 5"
9	711545	16	WSR, helical Spr Loc 5/16
10	711319	16	Nut-Hex 5/16-18 ST PL
****	900048		Dolly cart complete



LIMITED WARRANTY

Hako Minuteman, Inc. warrants to the original purchaser/user that this product is free from defects in workmanship and materials under normal use and service for a period of three years from date of purchase. In addition, Hako Minuteman, Inc. will, at its option, honor labor warranty claims for the first 12 months from date of sale, provided such claims are submitted through and approved by factory authorized repair stations. Hako Minuteman, Inc. will, at its option, repair or replace without charge, except for transportation costs, parts that fail under normal use and service when operated and maintained in accordance with the applicable operation and instruction manuals.

This warranty does not apply to normal wear, or to items whose life is dependent on their use and care, such as belts, cords, switches, hoses, rubber parts, electrical motor components or adjustments. Parts not manufactured by Hako Minuteman, Inc. such as engines, batteries, battery chargers, hydraulic pumps, and tires are covered by and subject to the warranties and/or guarantees of their manufacturers. Please contact Hako Minuteman, Inc. for procedures in warranty claims against these manufacturers.

Special warning to purchaser -- Use of replacement filters and/or prefilters not manufactured by Hako Minuteman, Inc. or its designated licensees, will void all warranties expressed or implied.

A potential health hazard exists without exact original equipment replacement.

All warranted items become the sole property of Hako Minuteman, Inc. or its original manufacturer, whichever the case may be.

Hako Minuteman, Inc. disclaims any implied warranty, including the warranty of merchantability and the warranty of fitness for a particular purpose. Hako Minuteman, Inc. assumes no responsibility for any special, incidental or consequential damages.

This limited warranty is applicable only in the U.S.A. and Canada, and is extended only to the original user/purchaser of this product. Customers outside the U.S.A. and Canada should contact their local distributor for export warranty policies. Hako Minuteman, Inc. is not responsible for costs or repairs performed by persons other than those specifically authorized by Hako Minuteman, Inc. This warranty does not apply to damage from transportation, alterations by unauthorized persons, misuse or abuse of the equipment, use of non-compatible chemicals, or damage to property, or loss of income due to malfunctions of the product.

If a difficulty develops with this machine, you should contact the dealer from whom it was purchased.

This warranty gives you specific legal rights, and you may have other rights which vary from state to state. Some states do not allow the exclusion or limitation of special, incidental or consequential damages, or limitations on how long an implied warranty lasts, so the above exclusions and limitations may not apply to you.

Minuteman®

World Headquarters
Hako Minuteman Inc.
111 South Rohlwing Road
Addison, Illinois 60101

(708) 627-6900
FAX (708) 627-1130

Hako Minuteman Canada Inc.
84-E Brunswick Blvd.
Dollard des Ormeaux
Quebec H9B 2C5

(514) 683-3880
FAX (514) 683-0809